

## mBusiness – SME COLLABORATIVE PORTAL

### Authors:

**Ciprian Candea – CEO**

**Laurentiu Ciovica – Software Engineer**

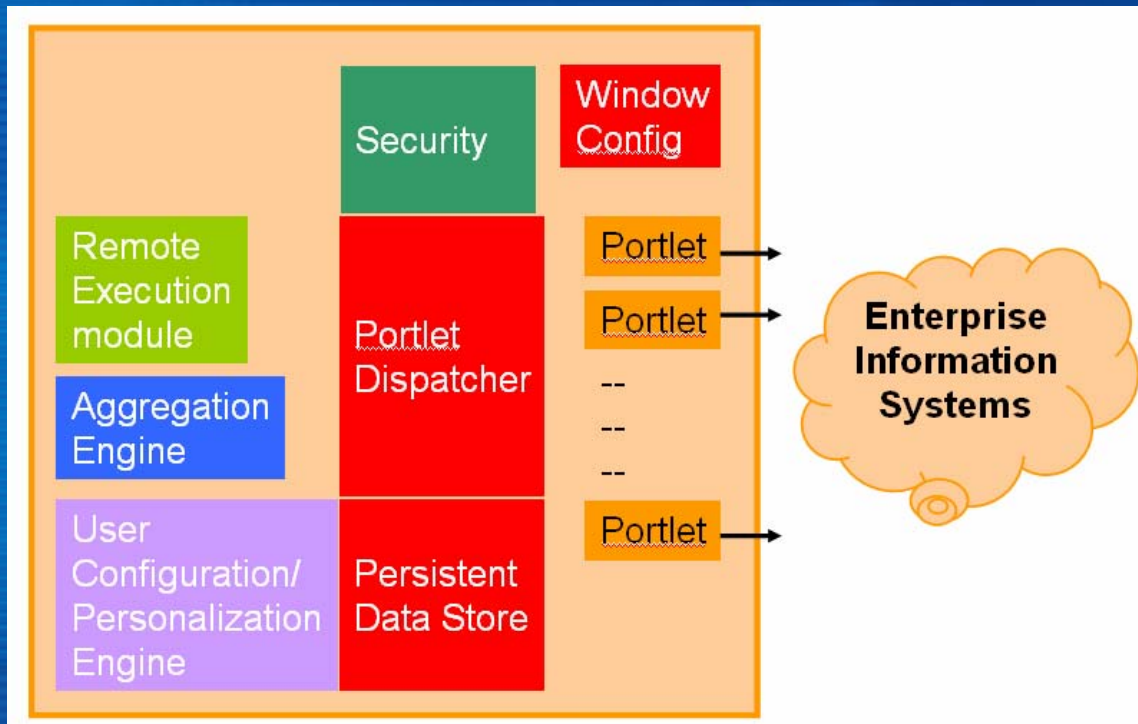
**Gabriela Radu – Junior Software Engineer**

Speaker: Laurentiu Ciovica - Software Engineer

- **Introduction**
- **Portals – enterprise collaborative solutions**
- **mBusiness Architecture**
- **mBusiness Portal Solution**
- **Conclusion**

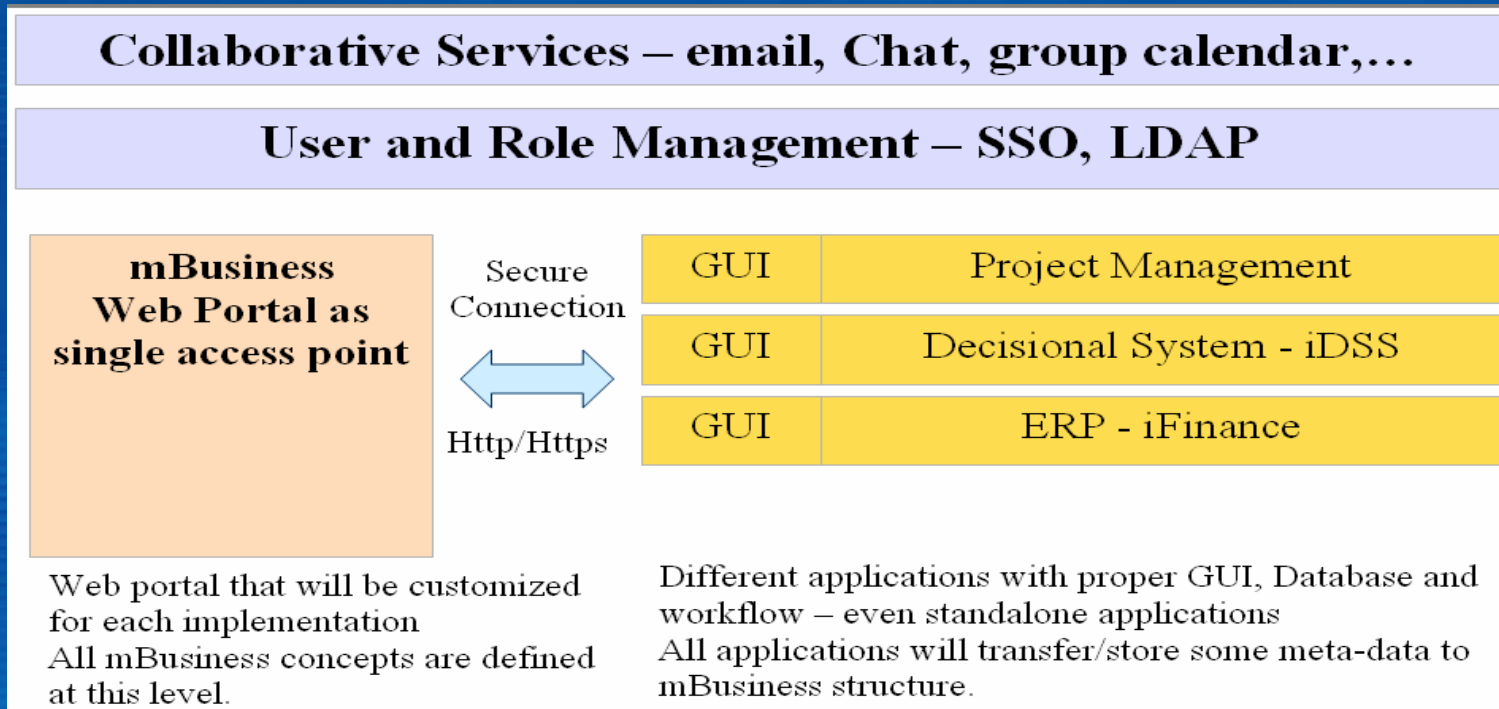
- **The SME Collaborative Portal is:**
  - **an enterprise collaborative portal approach that plays an active role for company employees, partners and customers by :**
    - **managing business content**
    - **unifying work teams**
    - **providing one - stop access to essential documentation, functionality and services with the help of well structured wiki.**

- Portal definitions:
  - “A portal is your enterprise”
  - “A portal is a single synergistic access to all your enterprise information, and only the appropriate information”



- Portal features:
  - Aggregation of content
  - Customized views
  - Personalized content
  - Collaboration features
  - Web services access

- The architecture of the mBusiness considers two issues:
  - Allowing stakeholders to collaborate in the context of different small and medium enterprise activities (project-based tasks).
  - Supporting different tools / applications that follow specific targets (collaboration, decisional support, project management and ERP – reporting level)
- In order to efficiently cooperate, stakeholders need a virtual space to access data and to transform it into information and knowledge
- The proposed architecture allow integration of any kind of communication tools such as instant messenger, email, while providing a central location to store documents related to different projects.



- The mBusiness is:
  - a modern J2EE-web based application that can run on Linux as well as on Windows servers
  - integrates with other solutions and / or with other enterprise software.
- The mBusiness is using :
  - industry standards such as XML, Web Services
  - J2EE to enable a better integration with all other mBusiness software components.

- The mBusiness is:
  - a customized version of Liferay Portal,
  - offering only those portlets that are needed in our solution, such as:
    - calendar,
    - message board,
    - news and announcements,
    - file and document management,
    - custom company public and private space with the possibility for each registered user to create its custom space and so on.

- For collaboration practices and in order to complete our solution we add certain portlets:

- The Skype portlet - a Skype web clone
- Notes portlet
- Project Repository
- a decision-making solution - iGDSS



collaboration

The background of the slide features a blue-tinted collage of images related to global collaboration. It includes a central globe, several hands reaching out towards it, a group of business professionals in a meeting, and a computer keyboard. The word 'collaboration' is written in a large, 3D, metallic-style font across the middle of the image.



- The mBusiness concept and technology:
  - reduces the time and expense of new product development
  - provides the ability to have 24x7 communications with customers on new product features and status.
- Through mBusiness:
  - the SME and their customers now have better visibility into what and how their businesses are doing.
  - they can check at any time to determine the state of their products.
- Different products from Wittmann&Partner where integrated and are provided with portal solution – final user can select what sections from portal will use and how be configured.

Thank you for your attention!